

CHICAGO RIVERWALK



Community Marketplace 2022



ASSETS, INFORMATION & SERVICES



Chicago Riverwalk is a 1.25 mile pedestrian path which runs parallel to Wacker Driver along the South Bank of the Main Branch of the Chicago River from DuSable Lake Shore Drive to Lake Street

The Community Marketplace is located between Michigan Avenue and Wabash and was completed in 2019 with the intention to feature local, Chicago owned businesses reflective of the diverse and culturally significant neighborhoods of the City of Chicago.



ASSETS, INFORMATION & SERVICES

DISTRICTS

four riverwalk districts



CONFLUENCE DISTRICT

ARCADE DISTRICT

CIVIC DISTRICT

ESPLANADE DISTRICT



ASSETS, INFORMATION & SERVICES

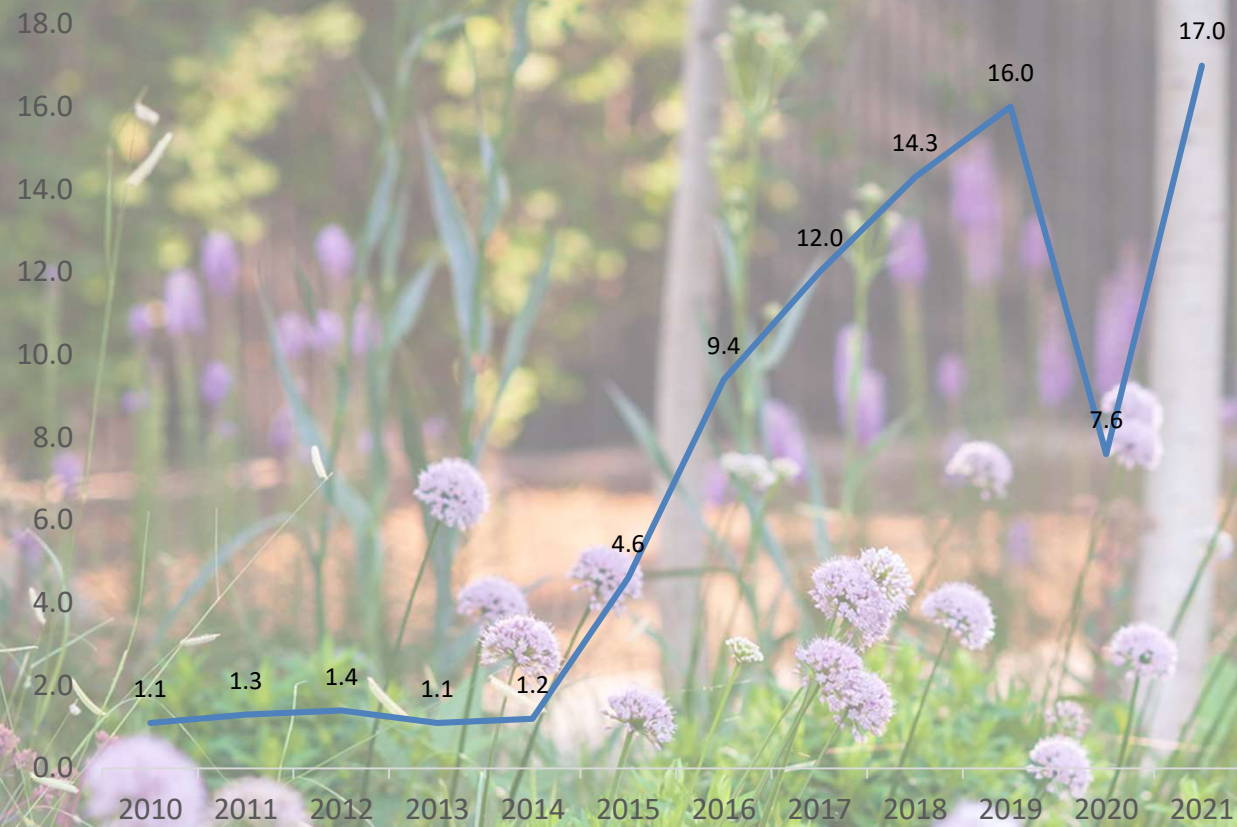
The Department of Assets, Information & Services began overseeing the Chicago Riverwalk in 2015 including the concessions program.

Revenues from the Riverwalk concessions are pledged towards repayment of the federal loan used to pay for the design and construction of the portion of the Riverwalk between State Street and Lake Street.



ASSETS, INFORMATION & SERVICES

Concession Program Revenues



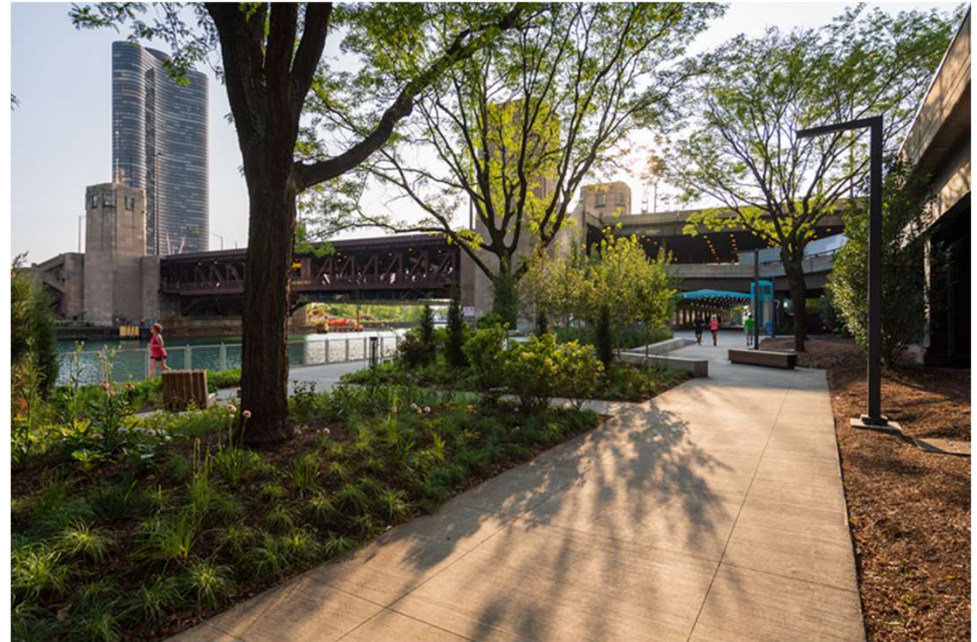
2021 Numbers are through August 31, 2021 and unaudited



ASSETS, INFORMATION & SERVICES

2018-2019 Improvements to Riverwalk East

- New landscaping
- New pavement
- New lighting
- New railing
- New Seating
- Utility upgrades
- Public restrooms
- Community Marketplace

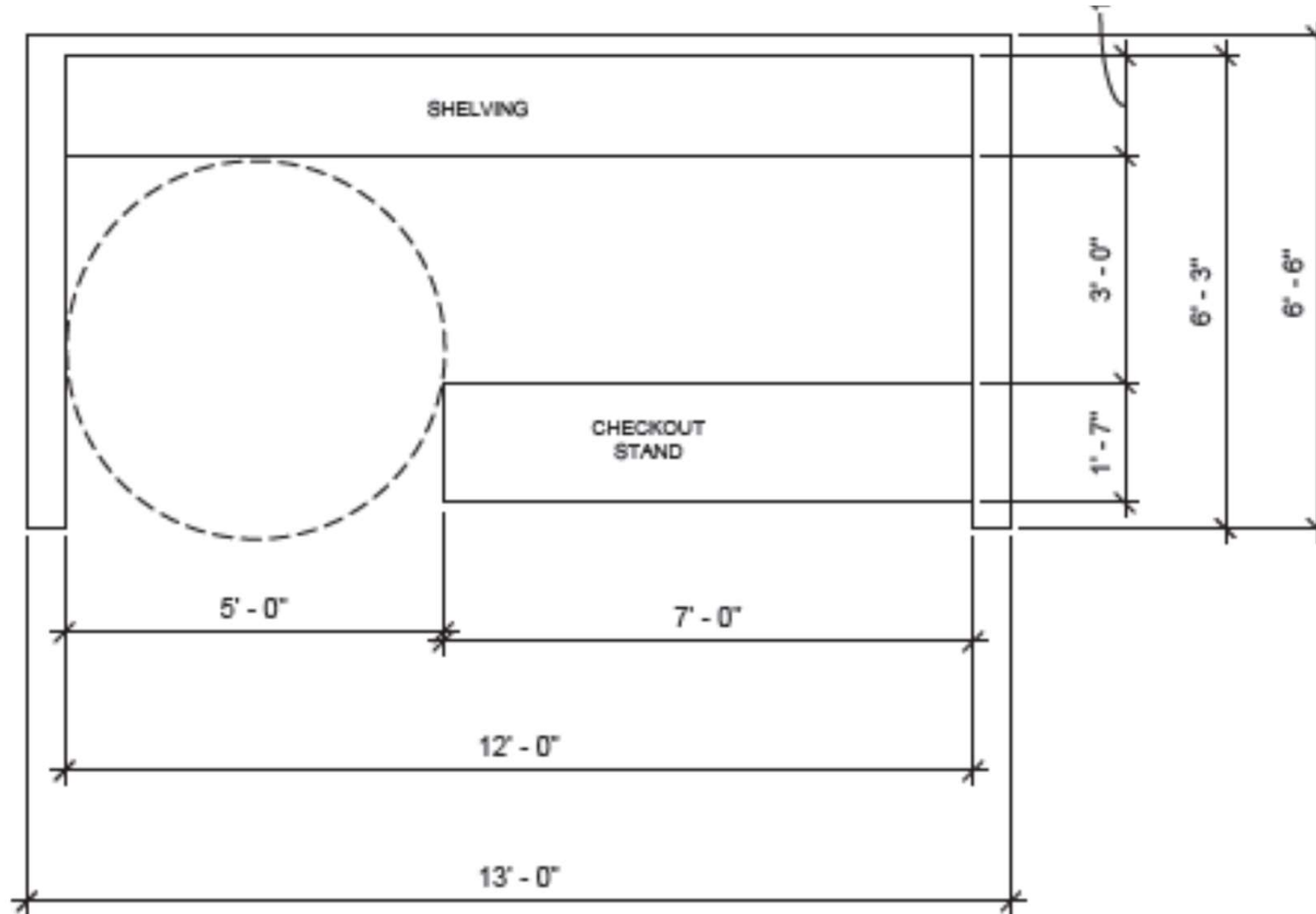


Community Marketplace Marketplace Kiosk Layout



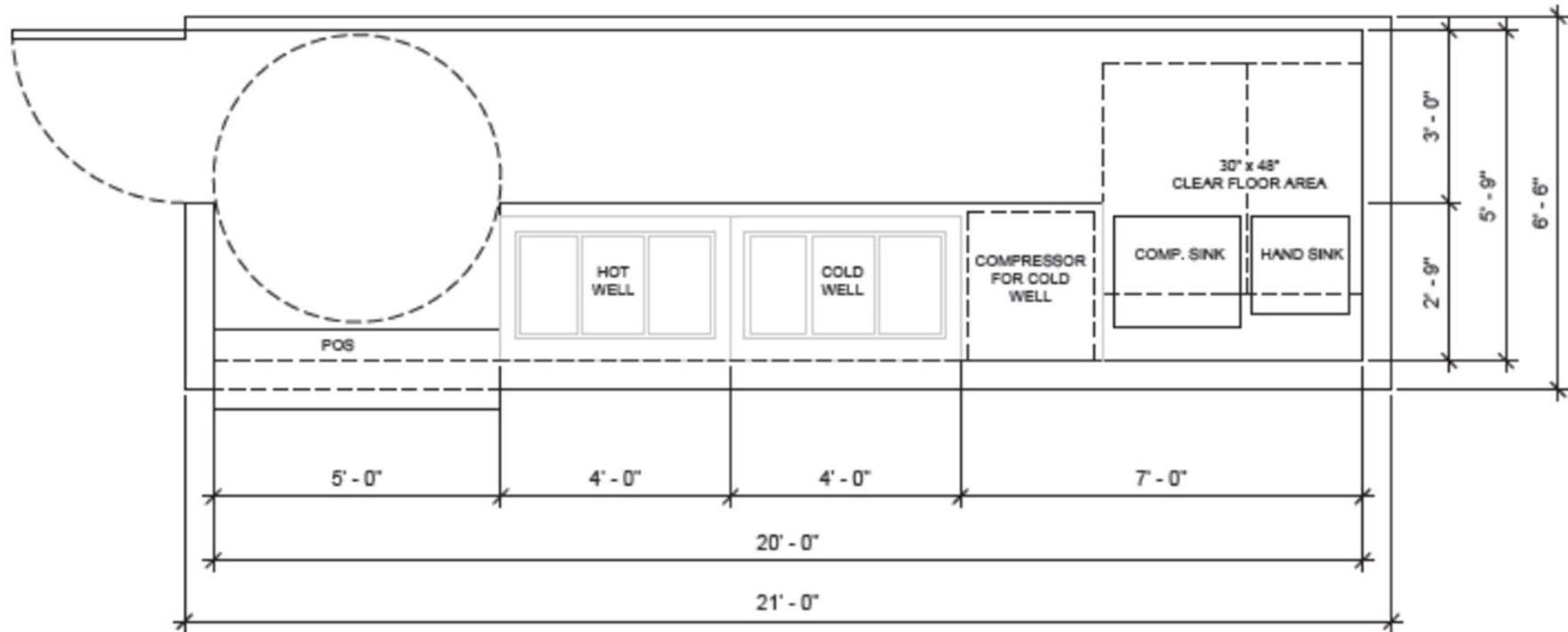
ASSETS, INFORMATION & SERVICES

Kiosk A & C



ASSETS, INFORMATION & SERVICES

Kiosk B



ASSETS, INFORMATION & SERVICES

Concession Program Revenues

2019- Revenues not collected because of late start in the season

2020- Revenues not collected or reported because of pandemic

2021- Revenues \$300,000

- Two vendors open daily are exceeding \$100,000
- Two vendors have struggled with staffing and operating on limited hours have lower revenues



ASSETS, INFORMATION & SERVICES

Goals:

- Provide opportunities to small, Chicago owned businesses to operate on the Chicago Riverwalk
- Enhance existing concession program with minority and women owned businesses that reflect the cultural diversity of our neighborhoods
- Promote downtown visitors to explore Chicago neighborhoods
- Provide an opportunity for experienced businesses that were adversely impacted by the pandemic to operate in a popular, outdoor attraction





Marketplace Program Process

Requests for Qualifications Issued

Qualified vendors enter into a Master Concession License Agreement for 3 years with two possible 1-year extensions

AIS issues a Requests for Proposals for the season

Selected vendors enter into a Use Agreement for Season

AIS may issue a Request for Proposal for other locations or for a specific time of a special event.

Selected vendor(s) enter into a Use Agreement



ASSETS, INFORMATION & SERVICES

Schedule:

- October 4- RFQ Issued
- October 12- BACP Webinar
- October 13- Pre-submittal teleconference
- October 15- Deadline for written questions
- October 20- Addenda publish
- **November 8- Applications Due**

Submit questions to chicagoriverwalk@cityofchicago.org



ASSETS, INFORMATION & SERVICES

Exhibits

- 1- Scope of Services
- 2- Application
- 3- Company References
- 4- Affidavit
- 5- Insurance Requirements (Example)
- 6- Master Concessions License Agreement
- 7- Use Agreement



The on-line EDS is found at:

http://www.cityofchicago.org/city/en/depts/dps/provdrs/comp/svcs/economic_disclosurestatementseds.html

For the purposes of completing an EDS for this RFQ, the "Requesting Department" should be AIS.

Submittal Requirements

1. Cover Letter
2. Application Form (Exhibit 2)
 - a. Qualifications and Experience Statement- Business Description
 - b. Concession to be operated on the Riverwalk
3. Three (3) Professional References (Exhibit 3)
4. Conflict of Interest Statement (can be included in the cover letter)
5. Executed Proposal Affidavit (Exhibit 4)
6. Legal Action for past five (5) years
7. EDS Certificate(s) of Filing
8. Financial Statements for the past three (3) years
9. Statement regarding compliance with Insurance Requirements set forth in future RFPs
10. Any other information you would like to share with the review committee



Evaluation Criteria

1. Comprehensive submittal including all required documents and thorough responses to all questions in the Application (Exhibit 2).
2. Accurate and full understanding of the project scale, type, unique elements and general approach to achieve the project goals.
3. Demonstrated experience in the successful operation of a business and concession.
4. Demonstrated success of proposed approach methodology in past or current similar projects.
5. Concession that is reflective of the cultural diversity of the neighborhoods of the City of Chicago; and
6. Capacity to perform the services in a busy environment.



THANK YOU!

QUESTIONS